



Inductive Burial Loop with Count Recorder Vehicle Counter



Better Decisions Start Here

Ordering Information:

-  Inductive Burial Loop Vehicle Counter with Count Recorder, TC-BL44-R
-  Dual Inductive Burial Loop Vehicle Counter with two Count Recorders, TC-2BL44-R

One of the most accurate vehicle counting technologies available, the TC-BL44 series uses a 4' by 4' inductive burial loop to count vehicle traffic. The TC-2BL44-R is available for two lanes or the TC-BL44-R for one lane. This counter is insensitive to changes in magnetic fields, foot traffic and even environment changes like temperature, ice and wind.

Data is stored on a Count Recorder data logger and the data is downloaded to a PC via the included USB connection. The standard TC-BL44-R includes a single Count Recorder and the TC-2BL44-R includes two Count Recorders.

Features

- Dual for Two Lanes or Non-Directional for Single Lane
- Industry-standard technology
- Highly accurate for moving or parked vehicles
- Ideal for security gate control and lot or deck occupancy
- Count Recorder data logger connects via USB for hourly count data



TC-BL44-R



TC-2BL44-R



Count Recorder

PARAMETER	MIN	TYP	MAX
Supply Current	-	50 mA DC	-
Operating Temperature	-10°C/14°F	-	55°C/131°F
Supply Voltage	12 Volts DC	-	24 Volts DC
Enclosure	9.5" x 11.25" x 7"		

Contact SenSource for additional options including signals and digital displays.

Inductive Burial Loop with Count Recorder Vehicle Counter

SENSOURCE

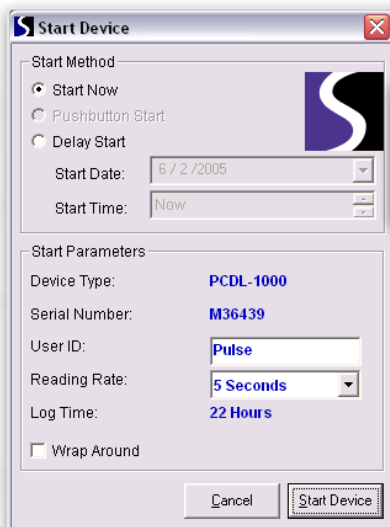
Better Decisions Start Here

Ordering Information:

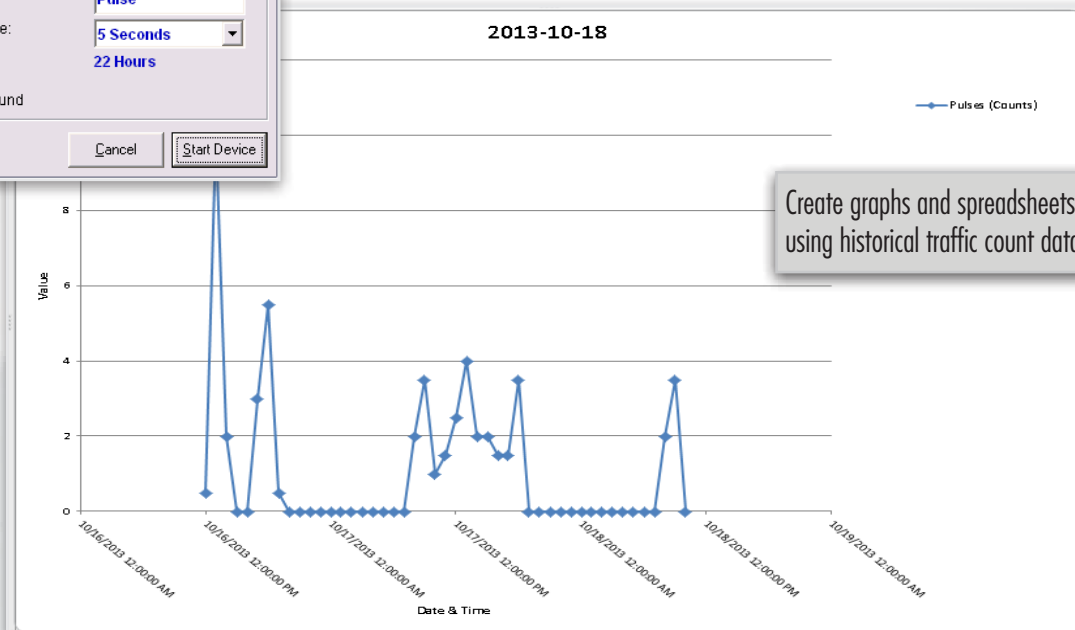
- Inductive Burial Loop Vehicle Counter with Count Recorder, TC-BL44-R
- Dual Inductive Burial Loop Vehicle Counter with two Count Recorders, TC-2BL44-R

Count Recorder Device and Software For The TC-BL44-R & TC-2BL44-R

The easy to use data logger has an included USB connector that plugs directly into your computer. After installing the software, the Count Recorder data logger allows you to choose which interval you would like to use to monitor your traffic. (Most typical is an increment of one hour.) The Count Recorder data logger is a convenient tool for capturing, saving and reporting traffic data.



The setup wizard takes you step by step through the initial setup and data logging options.



Create graphs and spreadsheets using historical traffic count data.

Count Recorder Data Logger



Better Decisions Start Here

Ordering Information:

 Count Recorder, PCDL-1000

 Replacement Battery, PCDL-BATT
3.6

The SenSource Count Recorder is a miniature battery-powered data logger. The Count Recorder eliminates the need to hand-record counts every day, providing stamped intervals by minute, hour, day or week. This effective, low-cost recording device can be used with most non-directional SenSource people and vehicle counters to easily record and transfer data to your PC or laptop. The Count Recorder operates for months at a time without resetting.

The Count Recorder functions as a data logger and records counts in "time bins." These time bins can be set to group your traffic from 1 second to 12 hours. The most common setting is a one-hour time bin. The accompanying software provides graphs for charting your traffic flow rates. Also, data can be easily downloaded to an Excel spreadsheet. Count Recorder software functions on Windows operating systems 95 and higher including Vista.

Features

- Miniature, discrete logger requires very little wiring
- Can be easily added to existing non-directional sensors
- Download data to any PC via USB cable
- Display and print time-stamped data in graphical or tabular form
- Operates autonomously until connected to a PC for downloading
- Records up to 16,363 records or 681 days when using 1-hour time stamps
- CSV text or MS-Excel File Formats
- One-year battery back-up saves data in event of power failure
- Programmable Scaling Factor

	A	B	C
1	Device Name:		PCDL-1000
2	Device Description:		Count Recorder
3	Serial Number:		N59351
4	Device ID:		NewFest
5			
6			Channel 1
7	Date	Time	Pulses (Counts)
26	10/17/2013	6:00:00 AM	0
27	10/17/2013	7:00:00 AM	0
28	10/17/2013	8:00:00 AM	2
29	10/17/2013	9:00:00 AM	3.5
30	10/17/2013	10:00:00 AM	1
31	10/17/2013	11:00:00 AM	1.5
32	10/17/2013	12:00:00 PM	2.5
33	10/17/2013	1:00:00 PM	4
34	10/17/2013	2:00:00 PM	2
35	10/17/2013	3:00:00 PM	2
36	10/17/2013	4:00:00 PM	1.5
37	10/17/2013	5:00:00 PM	1.5
38	10/17/2013	6:00:00 PM	3.5
39	10/17/2013	7:00:00 PM	0
40	10/17/2013	8:00:00 PM	0
41	10/17/2013	9:00:00 PM	0
42	10/17/2013	10:00:00 PM	0
43	10/17/2013	11:00:00 PM	0
44	10/18/2013	12:00:00 AM	0
45	10/18/2013	1:00:00 AM	0



PARAMETER	MIN	TYP	MAX
Memory	-	-	16,363 Records
Operating Temperature	-15°C/5°F	-	60°C/140°F
Battery Life	-	1 year	-
Battery Type	3.6V Lithium Ion		
Enclosure	2.2" L x 1.4" H x 0.6" D (55mm x 35mm x 16mm)		